

## Air Operated Double Diaphragm Pumps

Non metallic double diaphragm pumps are excellent for use in severe environments.( Atex,seawater ,chemical..)

Air section is from Polypropylene ;air consumption is low;dry self priming and small weight



Pumps range :

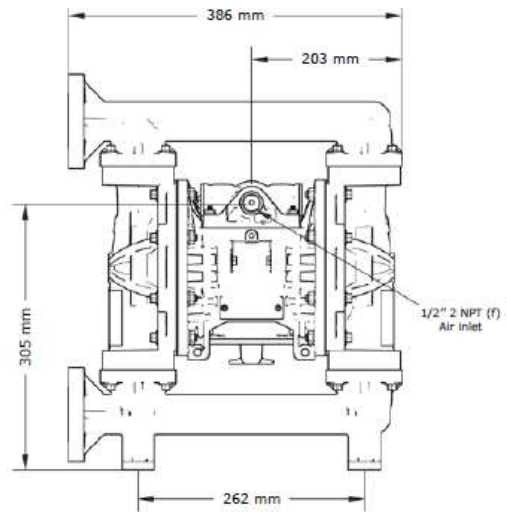
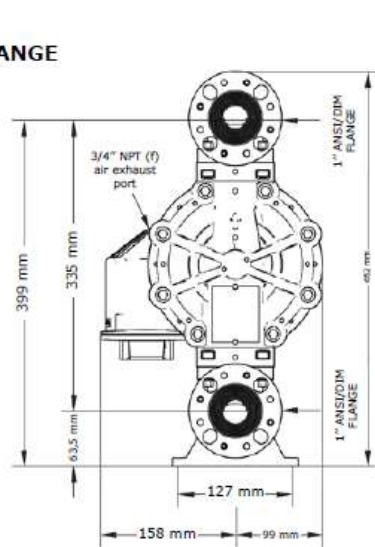
	Max Flowrate	Max discharge pressure	liquid connection	Air connection	suction lift dry
	L/min	Bars	type	type	m
	19	7	¼" Threaded BS/NPT	¼" Threaded BS/NPT	2.5
	25	7	3/8" Threaded BS/NPT	¼" Threaded BS/NPT	3.7
	57	7	1/2" Threaded BS/NPT	¼" Threaded BS/NPT	4.5
Ex	189	8.6	Flange PN10/16	1/2" Threaded BS/NPT	2.5
	568	8.4	Flange PN10/16	1/2" Threaded BS/NPT	2.5
	1059	7	Flange PN10/16	3/4" Threaded BS/NPT	2.4

Ex :

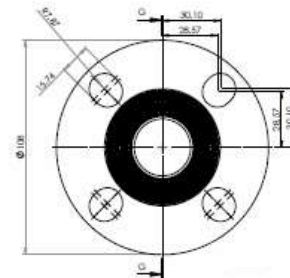
Dimensions and weight : L\*I\*h :390\*254\*452 mm 8.2 kg

Inlet /outlet diameter : 1"

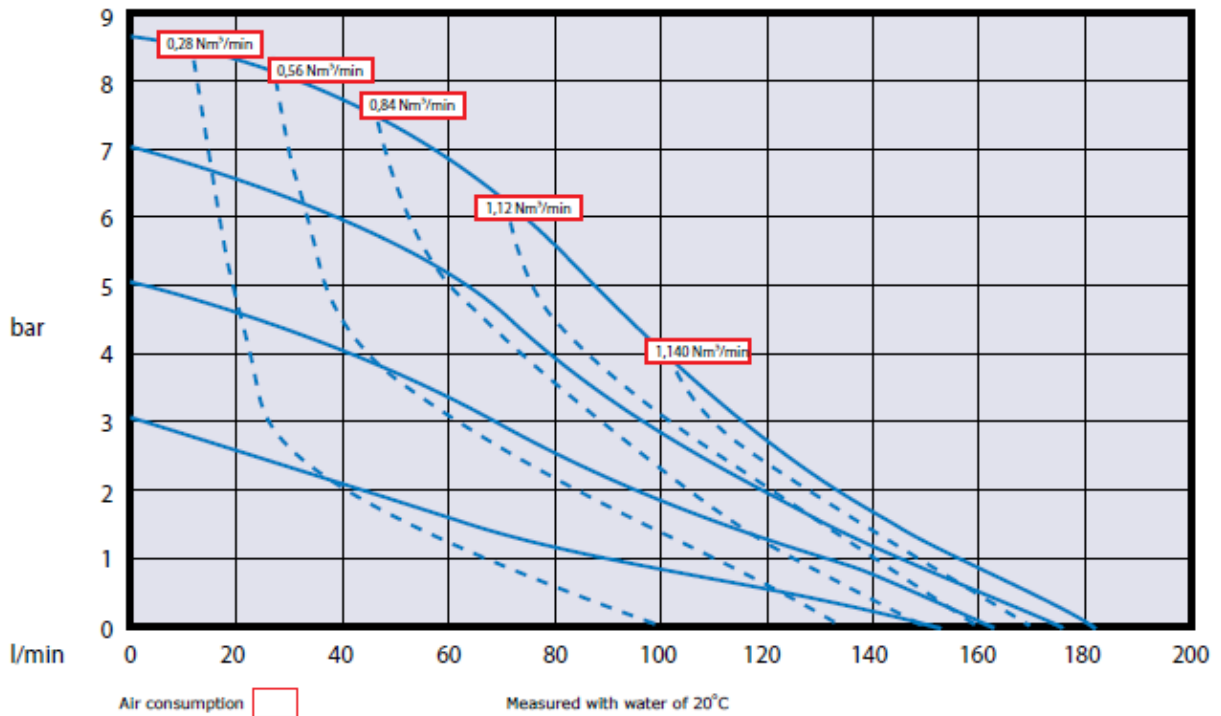
**END FLANGE**



**FLANGE DIMENSION IN MM**



All dimensions are in mm.



Performances curves given with 4 different air pressure :

With 5 bars air compressed , liquid flowrate is : max 160 L/min or 80L/min at 2.5 bars

