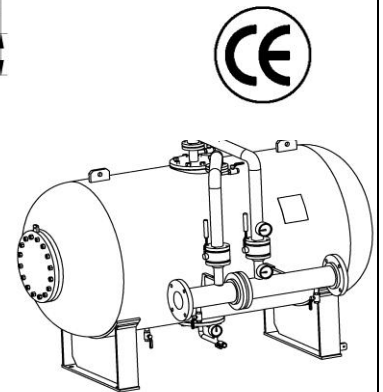
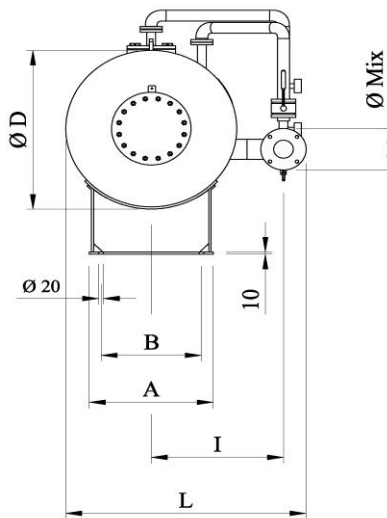
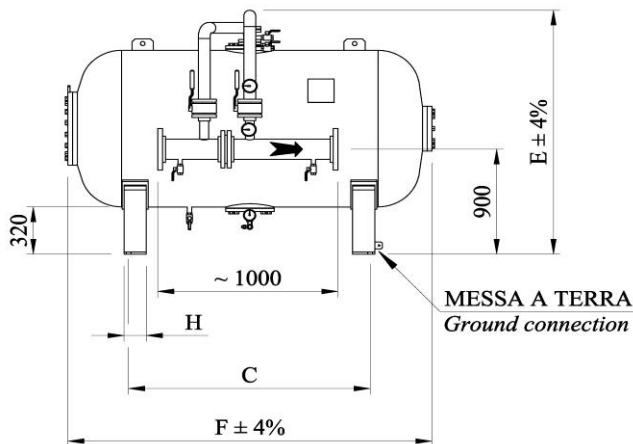


Type  
SMH/M

# Unités de stockage de dosage type horizontaux (Bladder tank with mixer)

**K-FIRE SYSTEMS®**



CAPACITA , (Capacity) l.	A mm	B mm	C mm	E mm ±4%	F mm ±4%	H mm	ØD mm	MIX. 3 3/4"		MIX. 6"		MIX. 8"		MIX. 10"		PESO (*) (Weight) Kg.
								I mm	L mm	I mm	L mm	I mm	L mm	I mm	L mm	
600	600	500	730	1560	1500	120	600	640	1135							336
1000	700	600	820	1760	1776	120	1000	740	1335	770	1390	810	1440	860	1500	560
1500	700	600	1360	1760	2426	120	1000	740	1335	770	1390	810	1440	860	1500	640
2000	800	700	1520	1860	2582	120	1100	790	1435	820	1490	860	1540	860	1600	765
2500	900	800	1560	1960	2715	150	1200	845	1535	875	1590	895	1640	965	1695	800
3000	1000	850	1600	2175	2062	150	1400	895	1735	925	1790	945	1835	1005	1990	1050
3500	1000	850	1680	2175	2562	150	1400	945	1735	975	1790	945	1835	1060	1990	1170
4000	1000	850	1770	2175	2712	150	1400	970	1735	1000	1790	1025	1835	1090	1990	1225
4500	1100	950	1680	2370	2825	150	1600	995	1935	1025	1990	1050	2045	1115	2200	1380
5000	1100	950	1680	2370	3075	200	1600	1045	1935	1075	1990	1105	2045	1170	2200	1500
5500	1100	950	1910	2370	3321	200	1600	1045	1935	1075	1990	1105	2045	1170	2200	1605
6000	1200	1050	1680	2520	3170	200	1750	1120	2085	1150	2140	1180	2195	1245	2350	1920
6500	1200	1050	2200	2520	3620	200	1750	1145	2085	1180	2140	1205	2195	1270	2350	1990
7000	1500	1350	1250	2770	2902	250	2000	1245	2335	1280	2395	1305	2445	1370	2600	2175
7500	1500	1350	1400	2770	3052	250	2000	1245	2335	1280	2395	1305	2445	1370	2600	2360
8000	1500	1350	1600	2770	3252	250	2000	1245	2335	1280	2395	1305	2445	1370	2600	2450
8500	1500	1350	1750	2770	3402	250	2000	1245	2335	1280	2395	1305	2445	1370	2600	2550
9000	1500	1350	1900	2770	3552	250	2000	1245	2335	1280	2395	1305	2445	1370	2600	2710
10000	1500	1350	2250	2770	3902	250	2000	1245	2335	1280	2395	1305	2445	1370	2600	2885
11000	1500	1350	2550	2770	4202	250	2000	1245	2335	1280	2395	1305	2445	1370	2600	2950
12000	1500	1350	2900	2770	4552	250	2000	1245	2335	1280	2395	1305	2445	1370	2600	3070

(\*) dans le tableau sont indiqués les poids du reservoir  
seul , pour obtenir le poids total ajouter  
le poids du proportionneur

(\*) The table shows the approximate weight of bladder  
tank without mixer. The mixer weight must be added to  
obtain the total weight.

