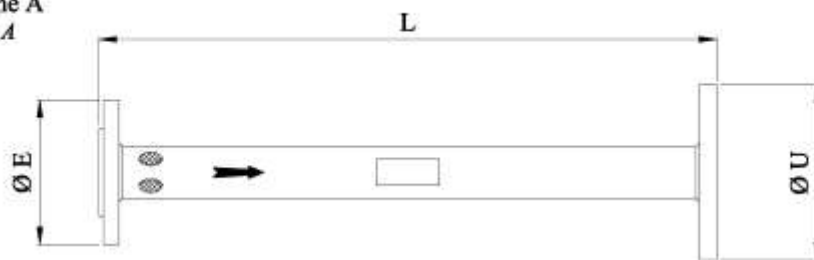


Type.  
**LSF**

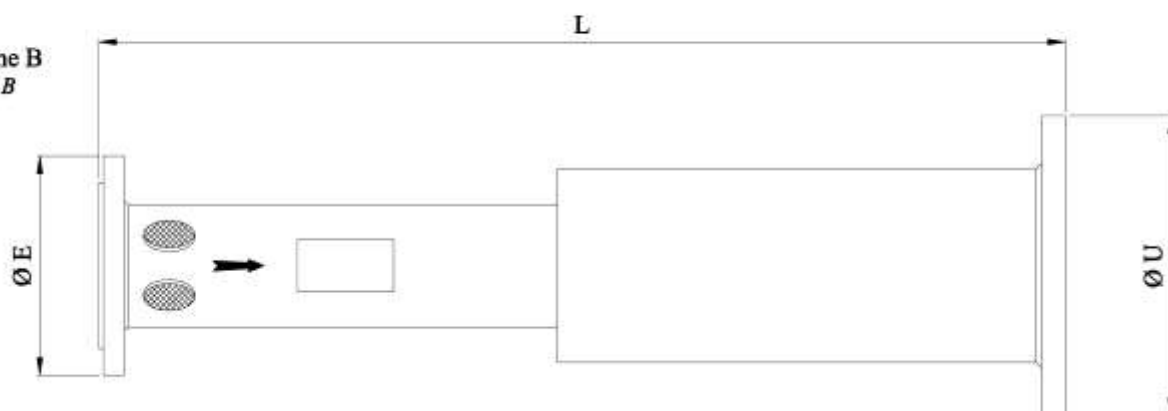
# Générateur mousse bas foisonnement (Fixed low expansion foam maker)

**K- FIRE SYSTEMS ®**

Versione A  
Version A



Versione B  
Version B



## CHARACTERISTIQUES - PERFORMANCE

| Type<br>(Model) | VERSION<br>(Version) | Ø<br>E ÷ U | L<br>mm | Débits (Flow Rate)<br>l/min 5 bar | Poids (Weight)<br>Kg |
|-----------------|----------------------|------------|---------|-----------------------------------|----------------------|
| LSF – 2         | A                    | 2" x 3"    | 600     | 200                               | 7                    |
| LSF – 4         | A                    | 2" x 3"    | 600     | 400                               | 7                    |
| LSF – 8         | A                    | 3" x 4"    | 800     | 800                               | 12                   |
| LSF – 12        | A                    | 4" x 6"    | 800     | 1200                              | 15                   |
| LSF – 16        | A                    | 4" x 6"    | 800     | 1600                              | 15                   |
| LSF – 20        | A                    | 4" x 8"    | 1000    | 2000                              | 20                   |
| LSF – 24        | B                    | 5" x 8"    | 1000    | 2400                              | 26                   |
| LSF – 32        | B                    | 5" x 8"    | 1000    | 3200                              | 26                   |

|                      |       |                                    |
|----------------------|-------|------------------------------------|
| Taux de foisonnement | 1 ÷ 5 | Dépend du type d'émulseur          |
| Foam expansion ratio |       | Depending on foam concentrate type |

## MATERIALI – MATERIALS

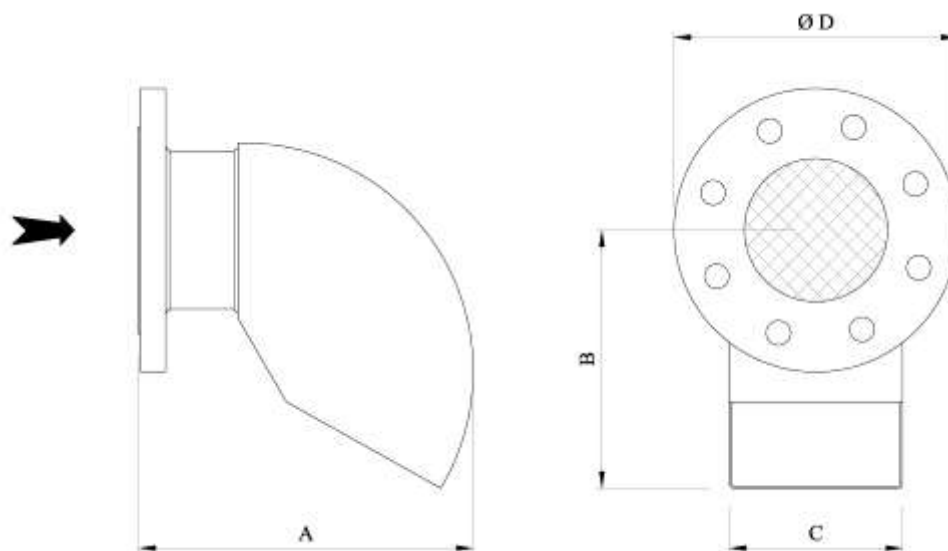
|  |  |
|--|--|
| Corps : acier au carbone                                   | Body : carbon steel                                    |
| Buse : acier INOX  | Nozzle : stainless steel                               |
| Brides: ASTM A105 DIN PN16 ou ANSI 150 RF                  | Flanges : ASTM A 105 DIN PN16 or ANSI 150 RF           |
| Finition : peinture epoxy RAL 3000 ou<br>Galvanisé à chaud | Finish : epoxy paint RAL 3000 or<br>hot dip galvanized |

Type.  
FP

## DEVERSOIR MOUSSE

K-FIRE SYSTEMS ®

(Foam pourer)



| Type<br>(Model) | Ø D | A<br>mm | B<br>mm | C<br>mm | Poids (Weight)<br>kg |
|-----------------|-----|---------|---------|---------|----------------------|
| FP – 2          | 3"  | 270     | 230     | 150     | 15                   |
| FP – 4          | 4"  | 270     | 230     | 150     | 15                   |
| FP – 8          | 6"  | 385     | 320     | 245     | 25 / 29              |
| FP – 15         | 8"  |         |         |         |                      |
| FP – 20         | 8"  | 380     | 420     | 355     | 32 / 43              |
| FP – 25         | 10" | 480     |         |         |                      |

### MATIERES – MATERIALS

|  |   |
|--|---|
| Corps : acier au carbone                       | Body: carbon steel                            |
| Brides : acier au carbone - A105               | Flanges material: carbon steel - A105         |
| Protection: acier INOX                         | Protection net: stainless steel               |
| Finition: peinture epoxy/poliurethane RAL 3000 | Finish: red epoxy/polyurethane paint RAL 3000 |

### A RICHIESTA – OPTIONAL

|                             |                                   |
|-----------------------------|-----------------------------------|
| Corps : acier INOX          | Body material: stainless steel    |
| Brides: acier INOX          | Flanges material: stainless steel |
| Finition: galvanisé à chaud | Finish: hot dip galvanized        |

